

160

03

المعادلة الاقتصادية

~~المعادلة الاقتصادية~~

المعادلة الاقتصادية

$$C = 100 + 0.8y_d \quad | \quad y_d = y - T_0 + K_0$$

$$I = 80 \Rightarrow I_0$$

$$G = 60 \Rightarrow G_0$$

$$T = 50 \Rightarrow T_0$$

$$R = 10 \Rightarrow R_0$$

$$X = 80 \Rightarrow X_0$$

$$\Pi = 30 \Rightarrow \Pi_0$$

المعادلة الاقتصادية
(X-Π) المعادلة الاقتصادية

$$y = ?$$

$$AS = AD$$

$$y = C + I + G + X - \Pi$$

$$y = a + b(y - T_0 + R_0) + I_0 + G_0 + X_0 - \Pi_0$$

$$y - by = a - bT_0 + bR_0 + I_0 + G_0 + X_0 - \Pi_0$$

$$y(1-b) = a - bT_0 + bR_0 + I_0 + G_0 + X_0 - \Pi_0$$

$$y = \frac{1}{1-b} (a - bT_0 + bR_0 + I_0 + G_0 + X_0 - \Pi_0)$$

$$y^M = \frac{1}{1-0.8} (100 + 0.8 \cdot 10 + 0.8 \cdot 50 + 80 + 60 + 80 - 30)$$

$$y^M = \frac{1}{0.2} (258) \Rightarrow y^M = 1290$$

$$\Pi = 20 + 0.2y$$

$$y^M = ? \quad (AS = AD)$$

$$y^M = \frac{1}{1-b+m} (a - bT_0 + bR_0 + I_0 + G_0 + X_0 - \Pi_0)$$

$$y^M = \frac{1}{1-0.8+0.2} (100 + 0.8 \cdot 10 + 0.8 \cdot 50 + 80 + 60 + 80 - 30)$$

$$y^M = \frac{1}{0.4} (258)$$

$$y^M = 645$$

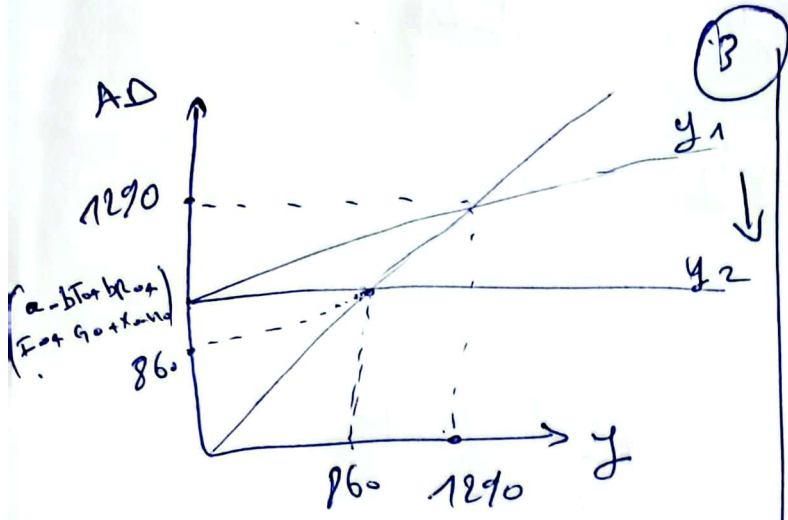
$$\Delta y = y_2 - y_1 = 645 - 1290 = -645$$

$$\Delta y = \frac{-1}{1-0.8+0.2} \Delta \Pi_0 = -2.5 \Delta \Pi_0$$

$$\Delta y = \frac{-1}{0.4} \Delta \Pi_0$$

$$\Delta y = \frac{-1}{1-b+m} \Delta \Pi_0$$

(ب) (ب) (ب) (ب) (ب)



$$K - \pi = \frac{1}{\pi_0}$$

$$\frac{1}{\pi_0 + m y}$$

$$K - \pi_0 = 10$$

$$\downarrow ay = -4300$$